

# SAMUEL HEATH

## Product Data Sheet

T2000 Trim to Suit V133-IS & V133-AIS



T2000-TCTR

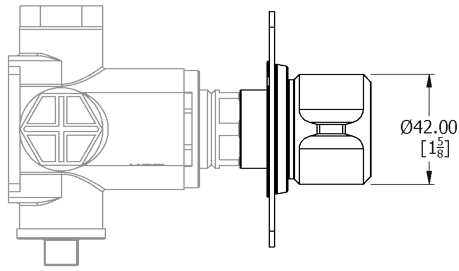
- Available Control Options -

 <p>T2000-TCBA</p>	 <p>T2000-TCGR</p>	 <p>T2000-TCOL</p>	 <p>T2000-TCOR</p>
 <p>T2000-TCOX</p>	 <p>T2000-TCPR</p>	 <p>T2000-TCTL</p>	

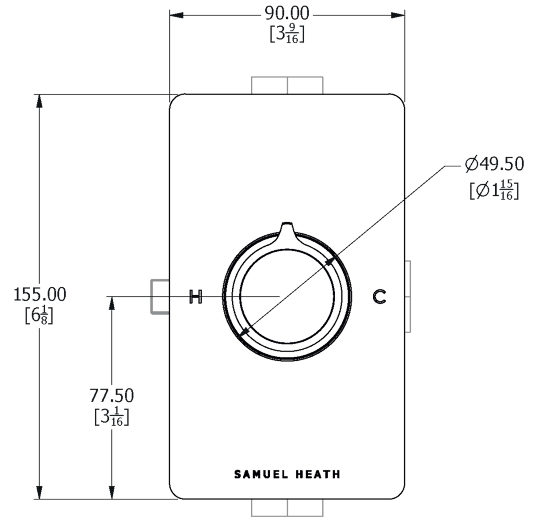
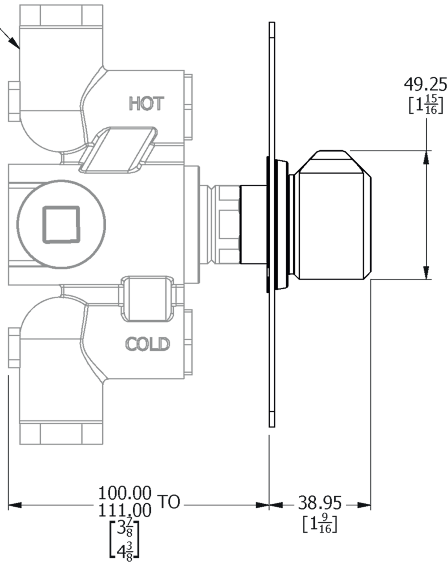


# Dimension Key

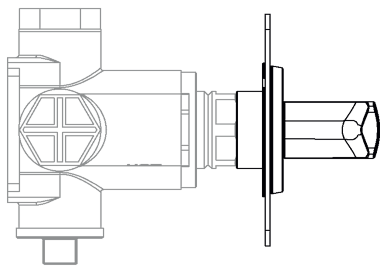
## T2000-TCTR



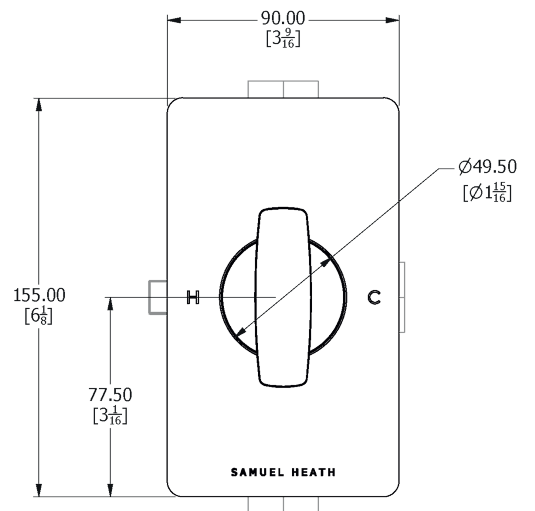
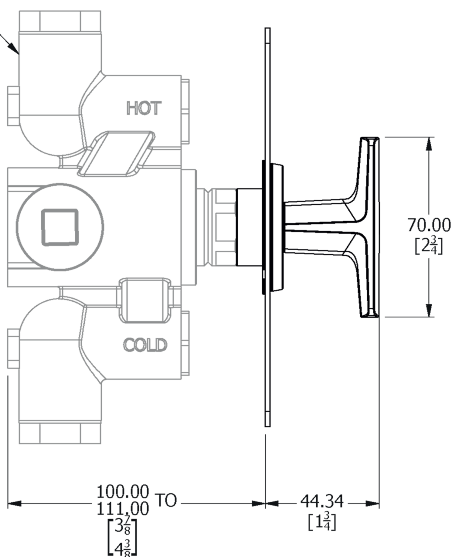
SEE INSTALLATION  
KIT DRAWING  
UK / EU: V133-IS  
US: V133-AIS



## T2000-TCBA

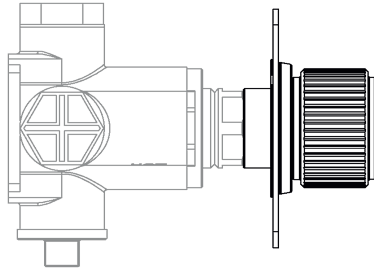


SEE INSTALLATION  
KIT DRAWING  
UK / EU: V133-IS  
US: V133-AIS

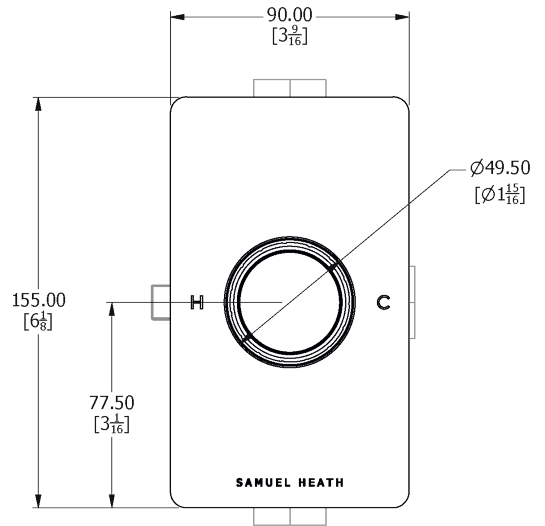
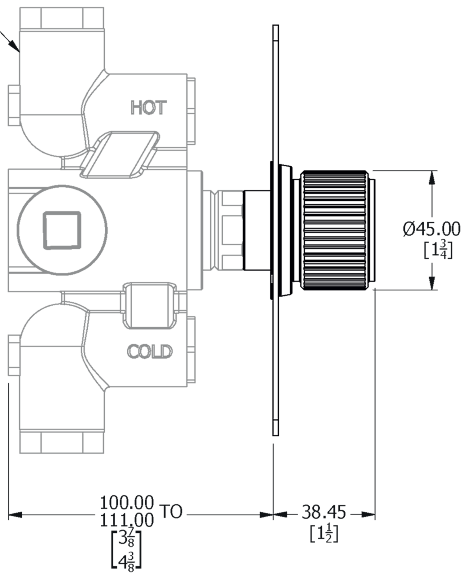


# Dimension Key

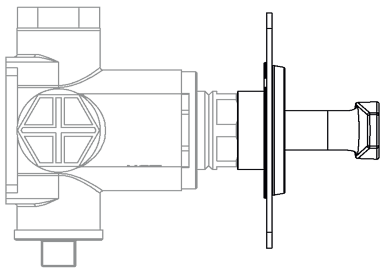
## T2000-TCGR



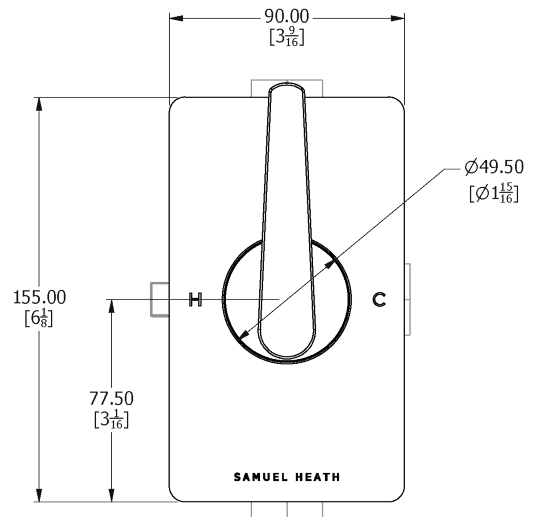
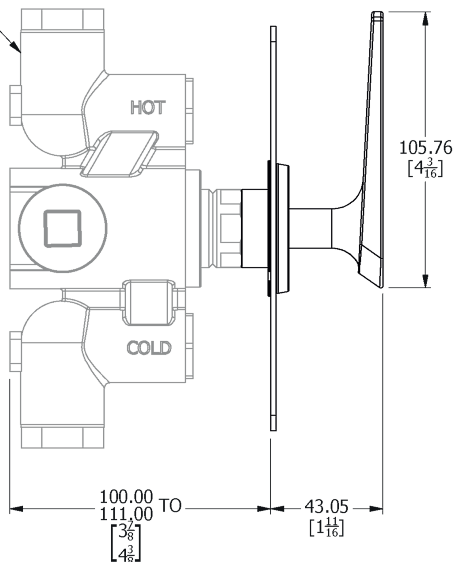
SEE INSTALLATION  
KIT DRAWING  
UK / EU: V133-IS  
US: V133-AIS



## T2000-TCOL

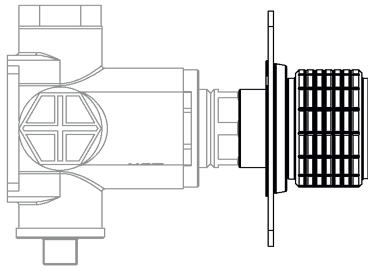


SEE INSTALLATION  
KIT DRAWING  
UK / EU: V133-IS  
US: V133-AIS

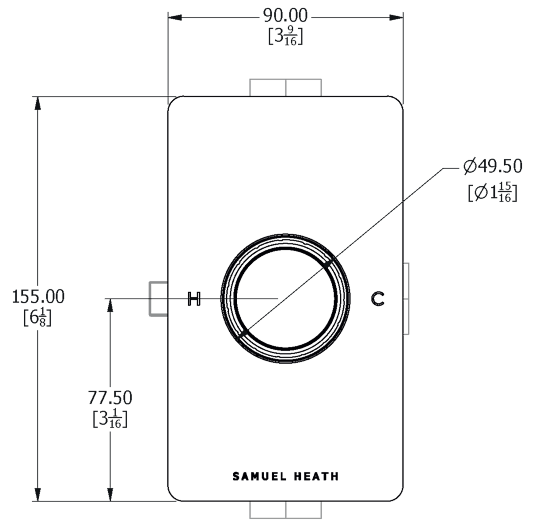
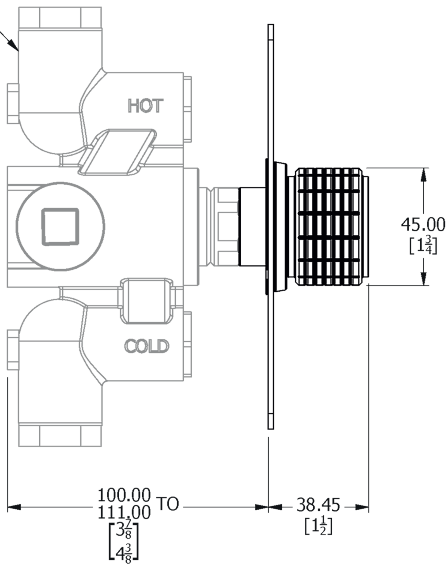


# Dimension Key

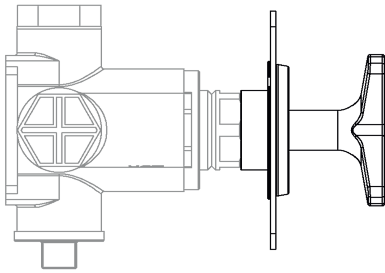
## T2000-TCOR



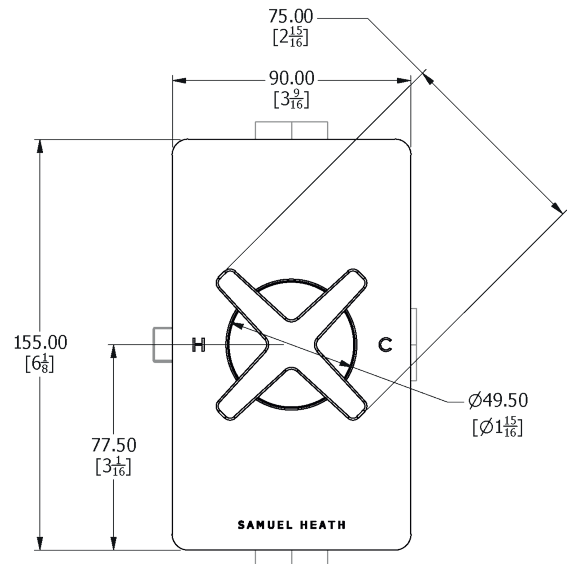
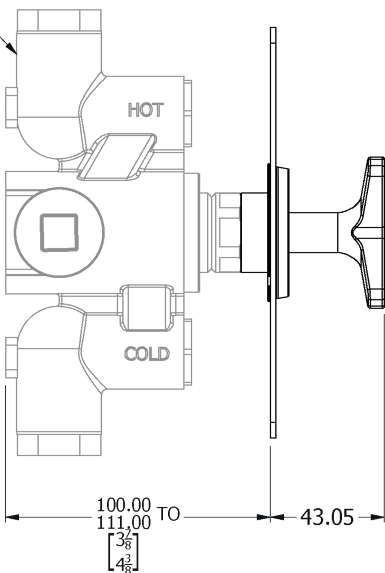
SEE INSTALLATION  
KIT DRAWING  
UK / EU: V133-IS  
US: V133-AIS



## T2000-TCOX

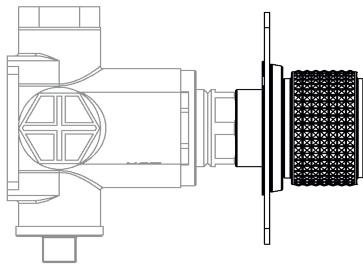


SEE INSTALLATION  
KIT DRAWING  
UK / EU: V133-IS  
US: V133-AIS

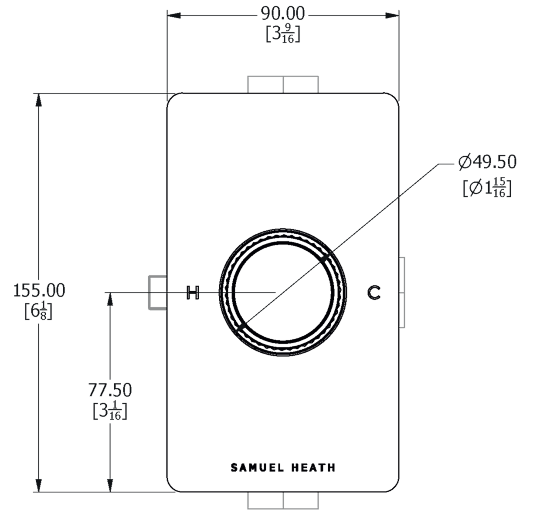
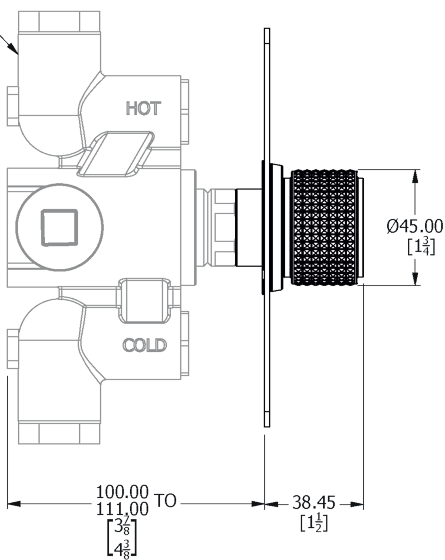


# Dimension Key

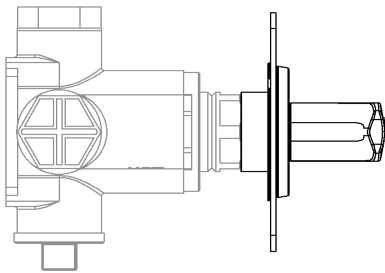
## T2000-TCPR



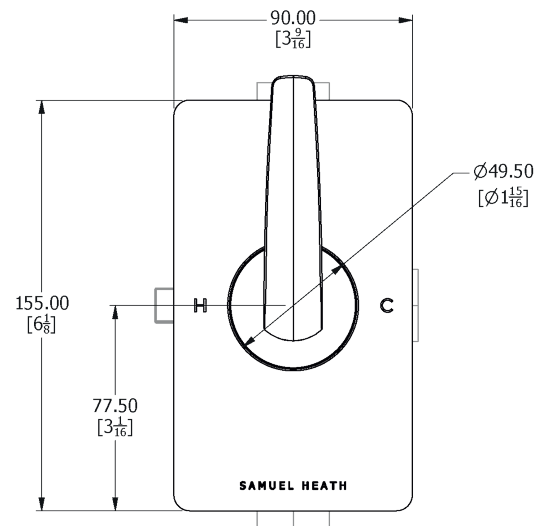
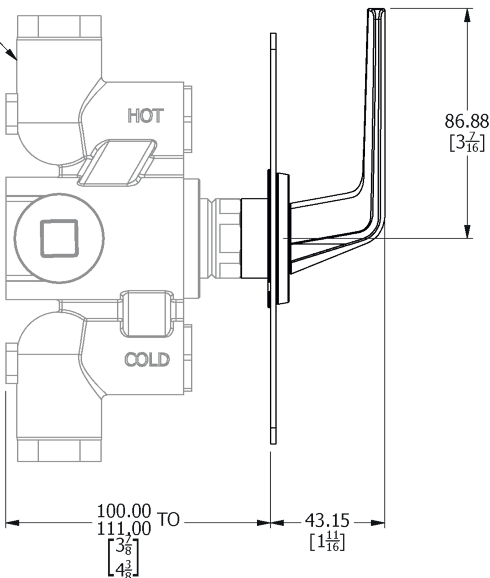
SEE INSTALLATION  
KIT DRAWING  
UK / EU: V133-IS  
US: V133-AIS



## T2000-TCTL

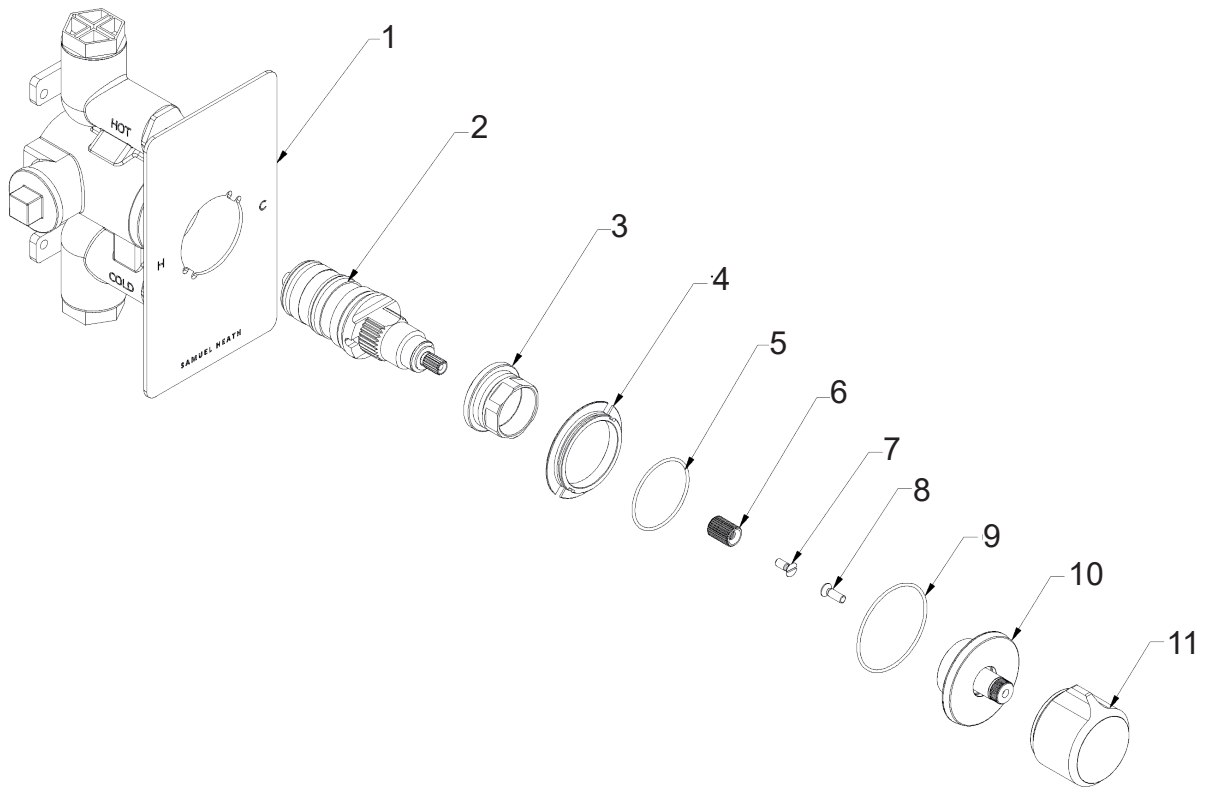


SEE INSTALLATION  
KIT DRAWING  
UK / EU: V133-IS  
US: V133-AIS



## Spares Information

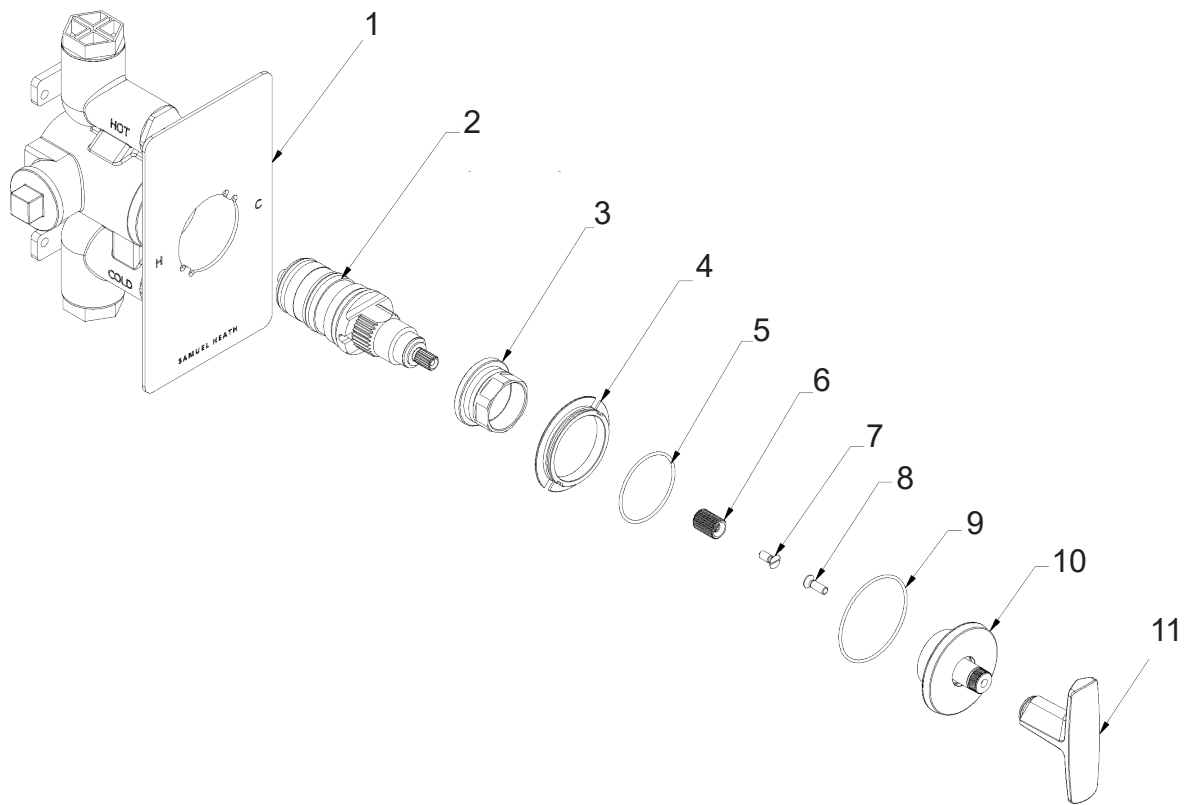
### T2000-TCTR



Item	Part No.	Description
1	-	Shower Plate
2	VS56064 (UK) VS56029 (US)	Thermostatic Cartridge
3	-	Lock Nut
4	-	Thermo Locking Ring
5	-	O-Ring
6	-	Spline Adaptor
7	-	Screw
8	-	Screw
9	-	O-Ring
10	-	Thermo Body Assembly
11	-	Knob

# Spares Information

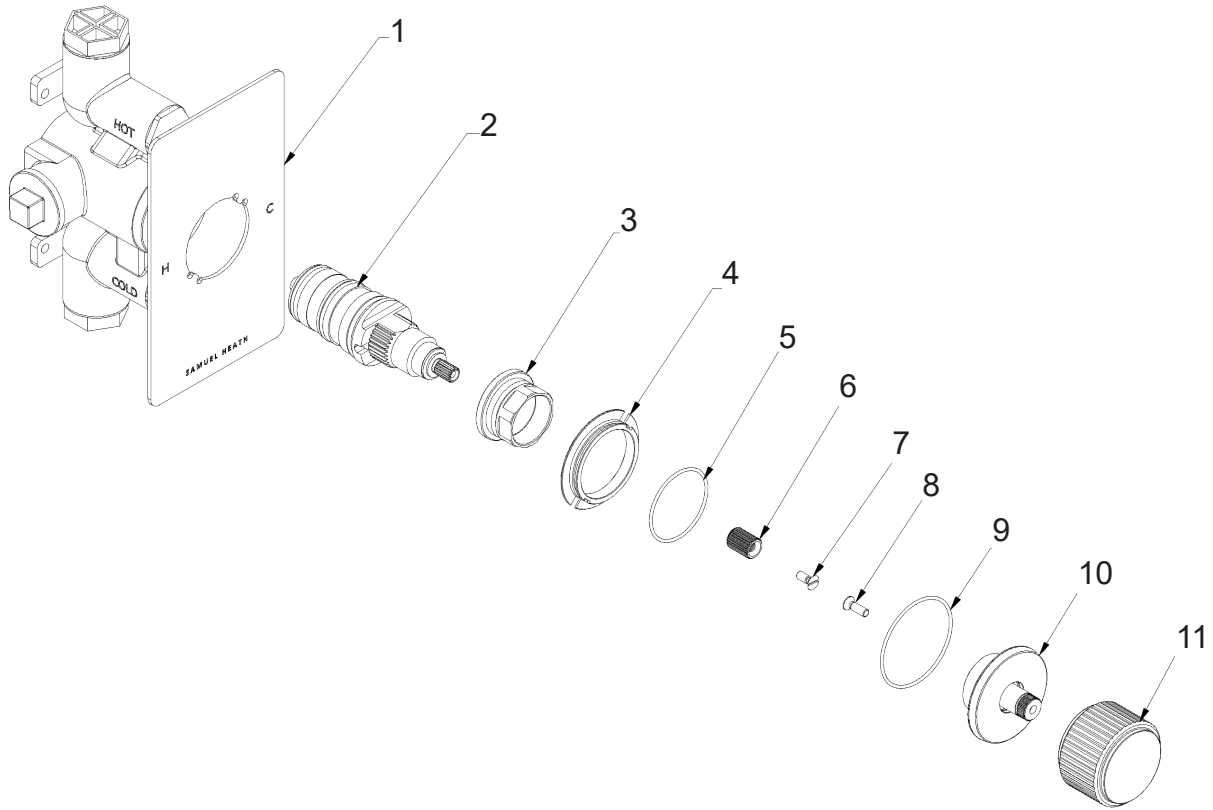
## T2000-TCBA



Item	Part No.	Description
1	-	Shower Plate
2	VS56064 (UK) VS56029 (US)	Thermostatic Cartridge
3	-	Lock Nut
4	-	Thermo Locking Ring
5	-	O-Ring
6	-	Spline Adaptor
7	-	Screw
8	-	Screw
9	-	O-Ring
10	-	Thermo Body Assembly
11	-	T-Bar

# Spares Information

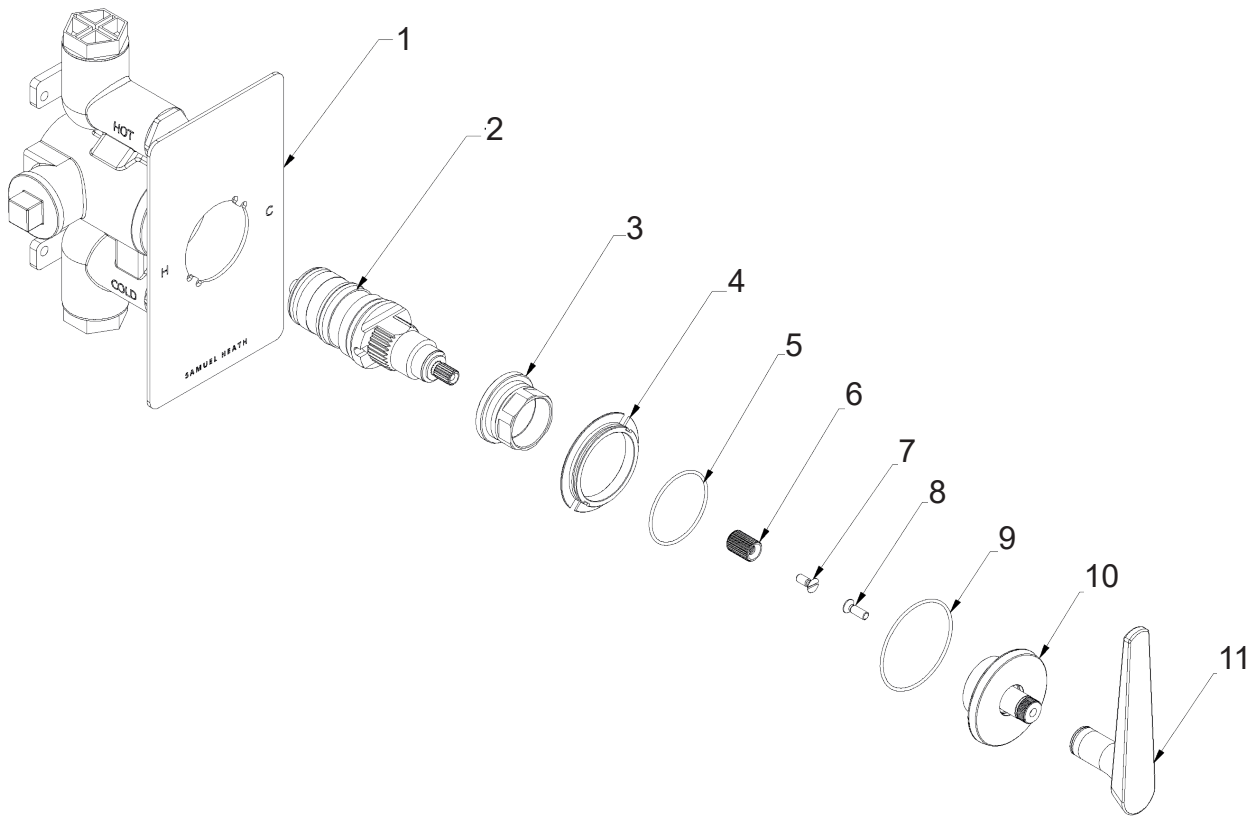
## T2000-TCGR



Item	Part No.	Description
1	-	Shower Plate
2	VS56064 (UK) VS56029 (US)	Thermostatic Cartridge
3	-	Lock Nut
4	-	Thermo Locking Ring
5	-	O-Ring
6	-	Spline Adaptor
7	-	Screw
8	-	Screw
9	-	O-Ring
10	-	Thermo Body Assembly
11	-	Knob

## Spares Information

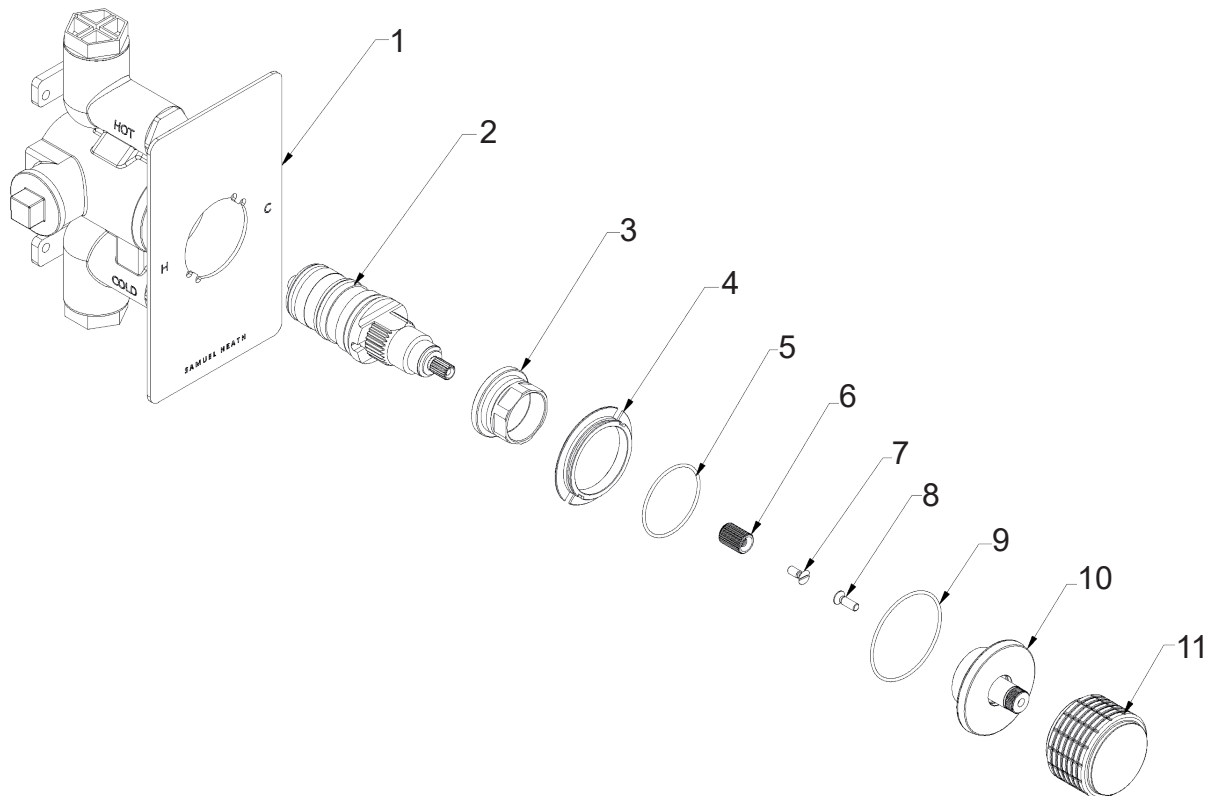
### T2000-TCOL



Item	Part No.	Description
1	-	Shower Plate
2	VS56064 (UK) VS56029 (US)	Thermostatic Cartridge
3	-	Lock Nut
4	-	Thermo Locking Ring
5	-	O-Ring
6	-	Spline Adaptor
7	-	Screw
8	-	Screw
9	-	O-Ring
10	-	Thermo Body Assembly
11	-	Lever

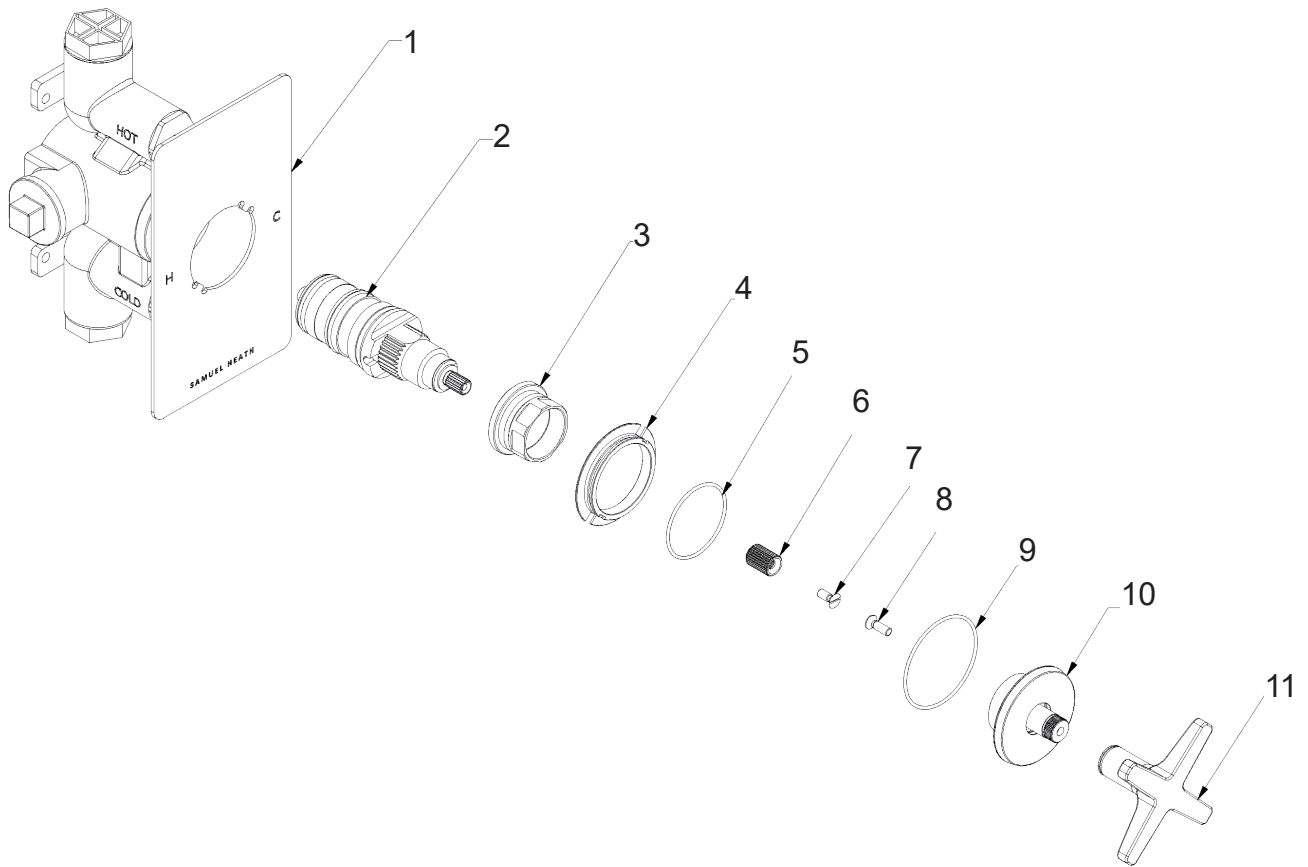
## Spares Information

### T2000-TCOR



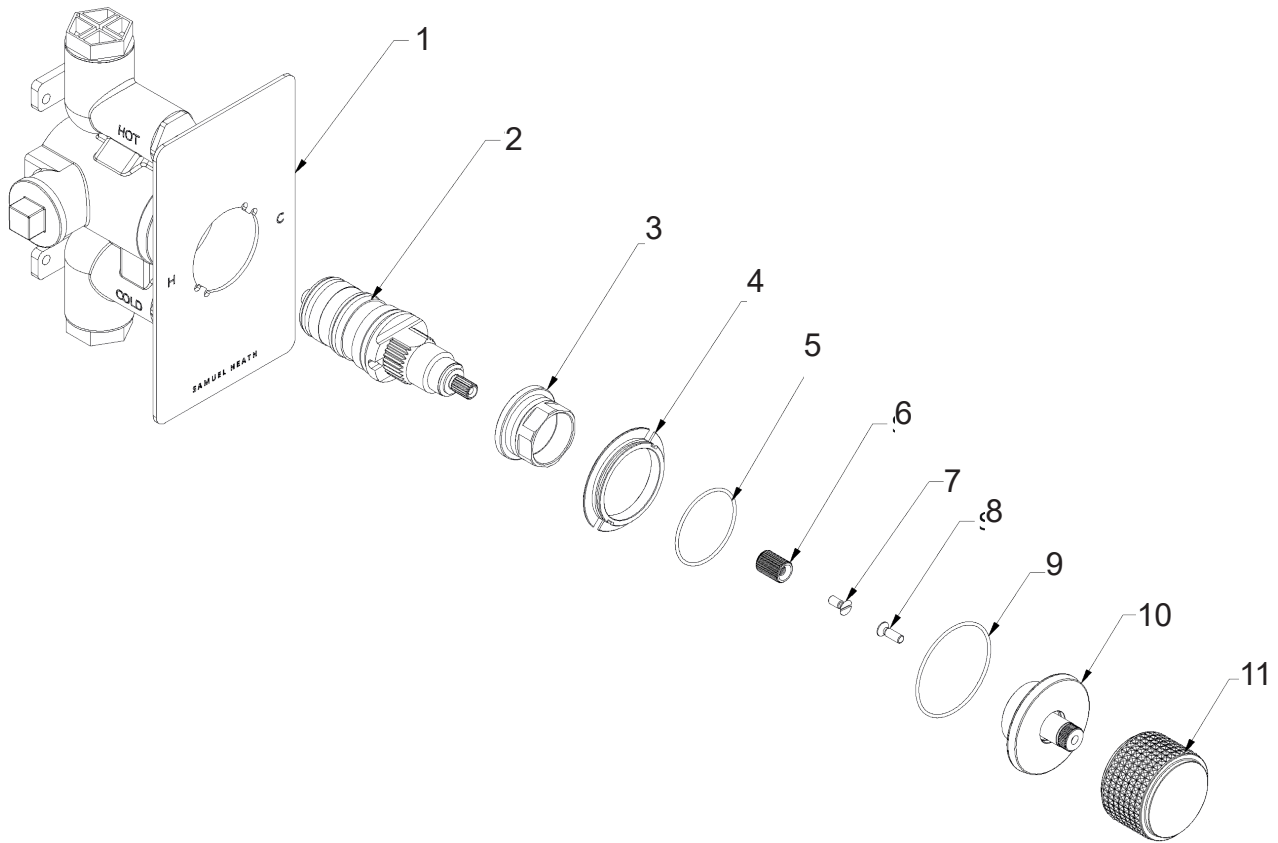
Item	Part No.	Description
1	-	Shower Plate
2	VS56064 (UK) VS56029 (US)	Thermostatic Cartridge
3	-	Lock Nut
4	-	Thermo Locking Ring
5	-	O-Ring
6	-	Spline Adaptor
7	-	Screw
8	-	Screw
9	-	O-Ring
10	-	Thermo Body Assembly
11	-	Knob

## Spares Information T2000-TCOX



Item	Part No.	Description
1	-	Shower Plate
2	VS56064 (UK) VS56029 (US)	Thermostatic Cartridge
3	-	Lock Nut
4	-	Thermo Locking Ring
5	-	O-Ring
6	-	Spline Adaptor
7	-	Screw
8	-	Screw
9	-	O-Ring
10	-	Thermo Body Assembly
11	-	Cross Top

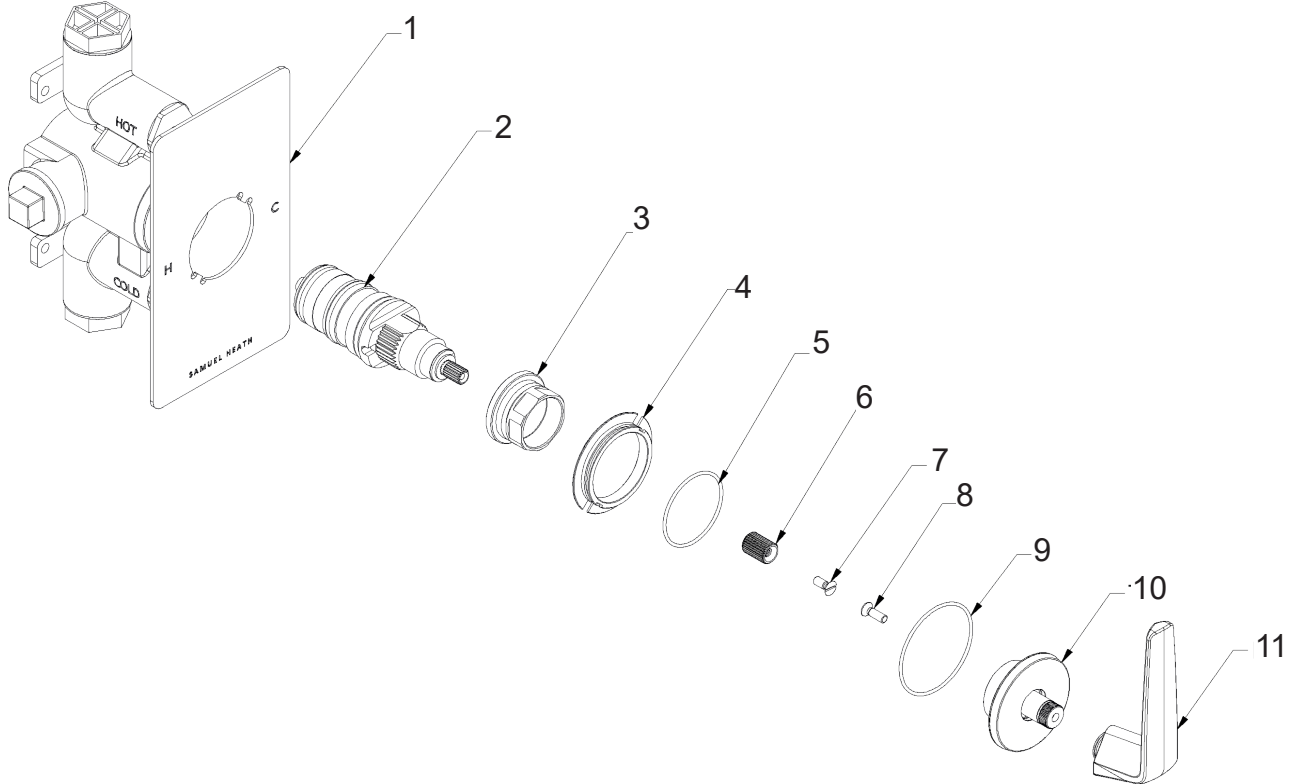
## Spares Information T2000-TCPR



Item	Part No.	Description
1	-	Shower Plate
2	VS56064 (UK) VS56029 (US)	Thermostatic Cartridge
3	-	Lock Nut
4	-	Thermo Locking Ring
5	-	O-Ring
6	-	Spline Adaptor
7	-	Screw
8	-	Screw
9	-	O-Ring
10	-	Thermo Body Assembly
11	-	Knob

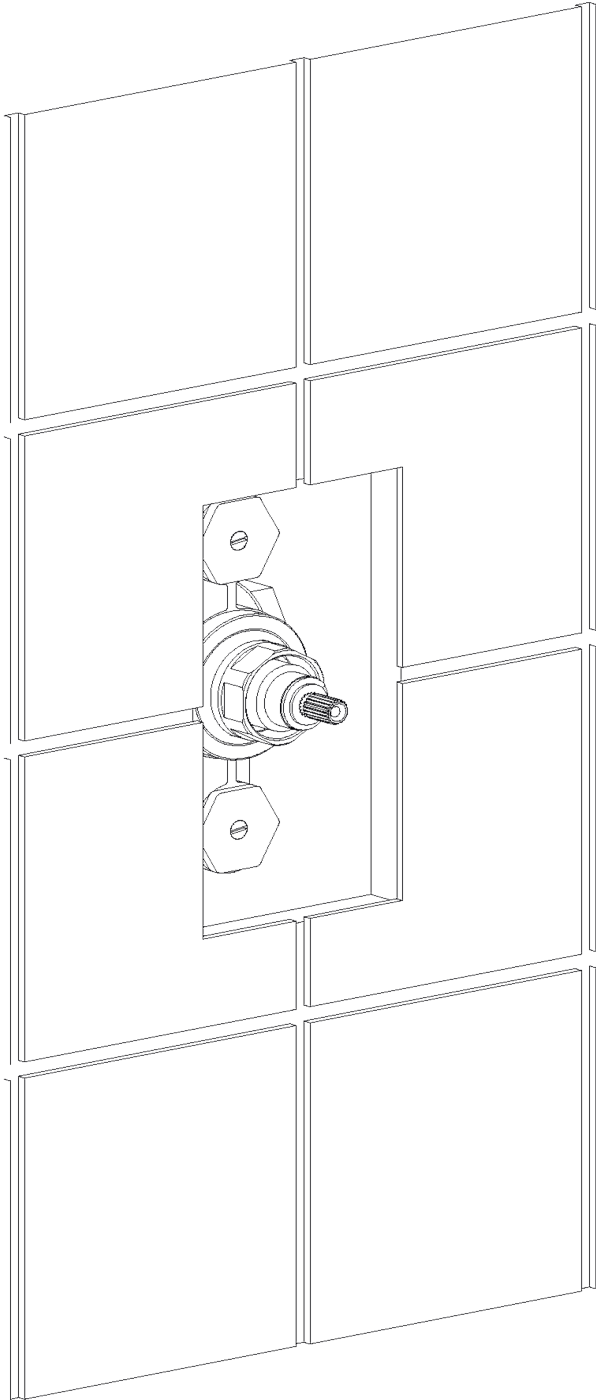
## Spares Information

### T2000-TCTL



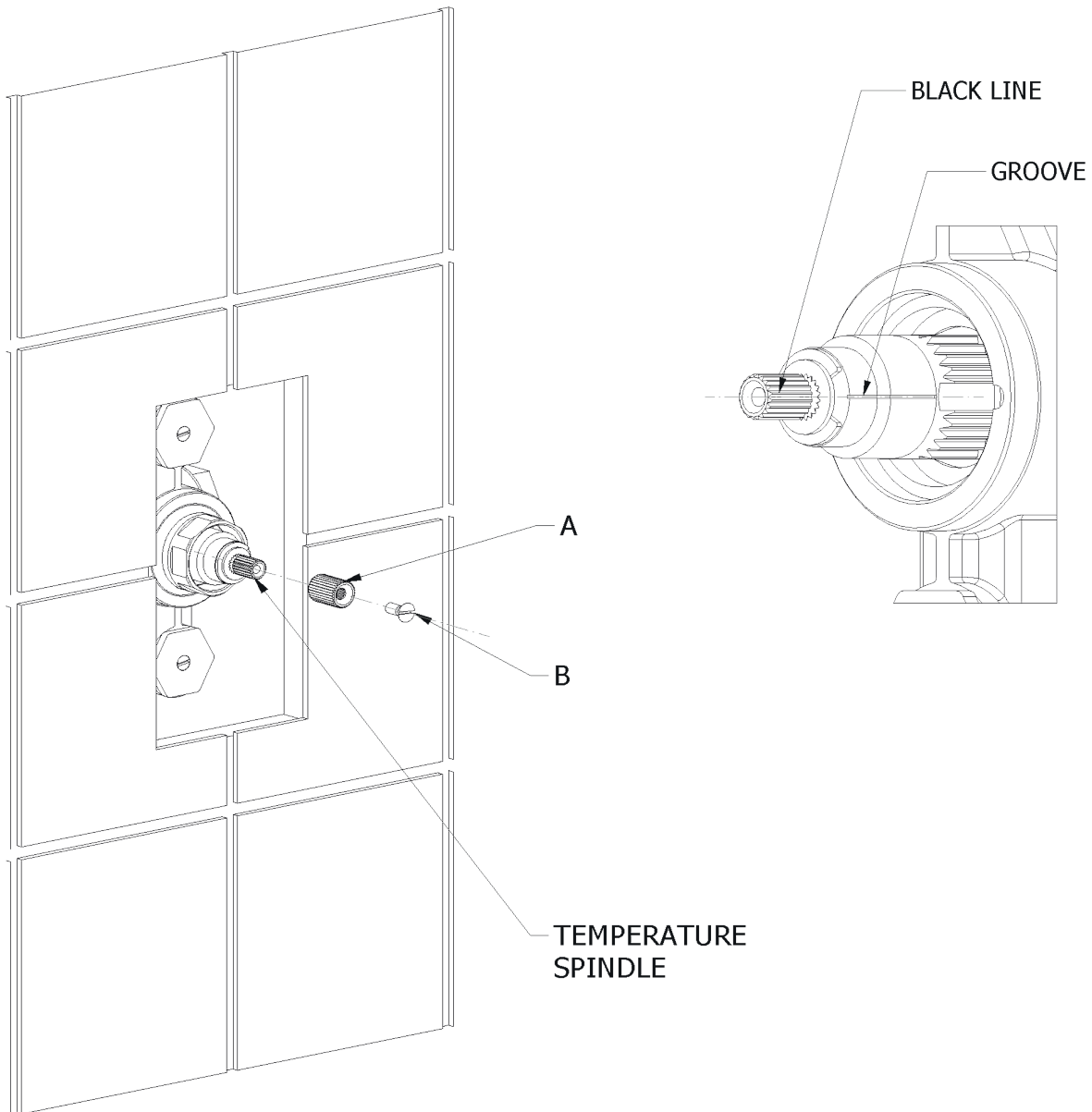
Item	Part No.	Description
1	-	Shower Plate
2	VS56064 (UK) VS56029 (US)	Thermostatic Cartridge
3	-	Lock Nut
4	-	Thermo Locking Ring
5	-	O-Ring
6	-	Spline Adaptor
7	-	Screw
8	-	Screw
9	-	O-Ring
10	-	Thermo Body Assembly
11	-	Lever

# Installaton



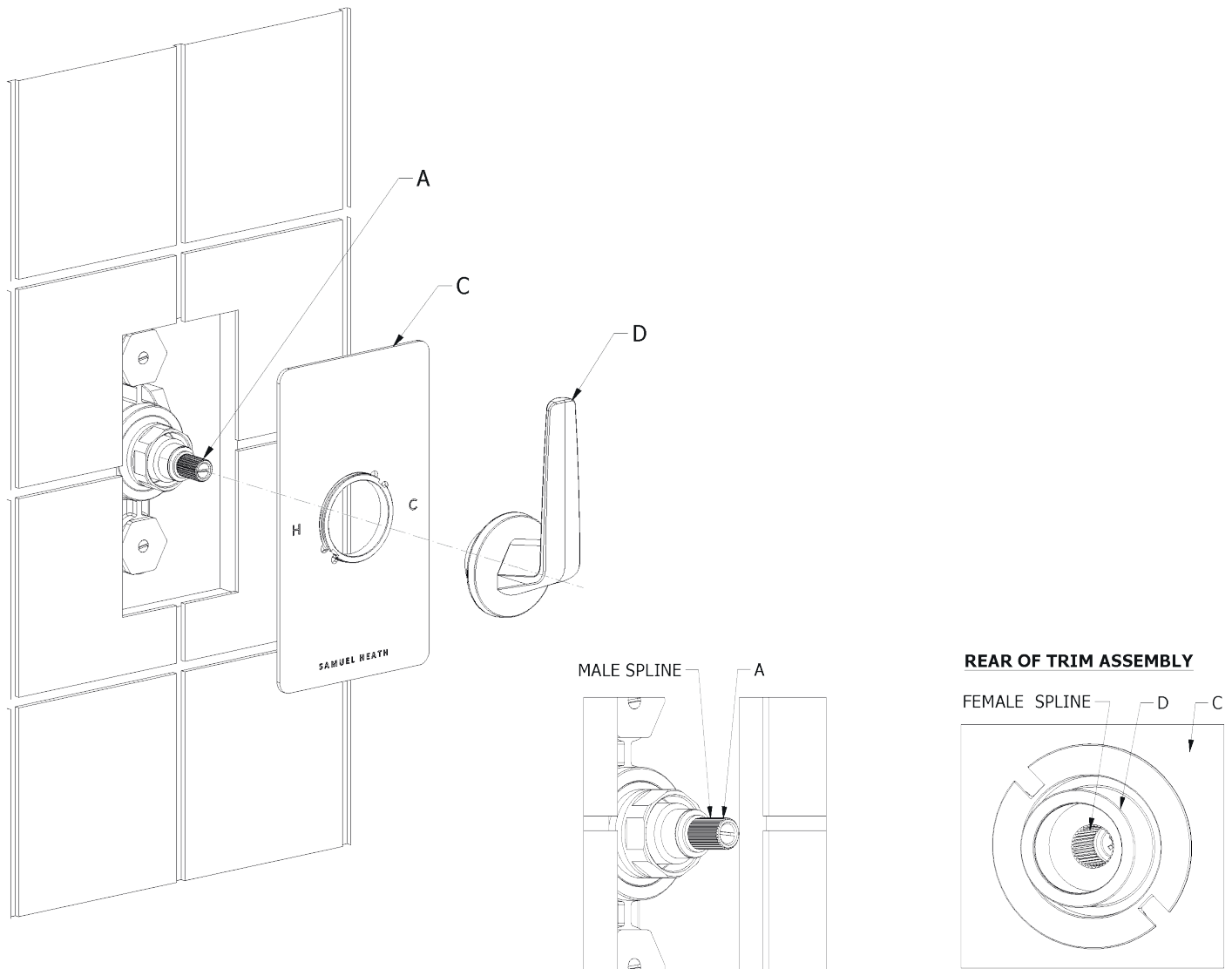
1. Install the finished surface, ensuring the finished surface is in accordance with the minimum and maximum installation depths shown in the front of this booklet.

## Installaton



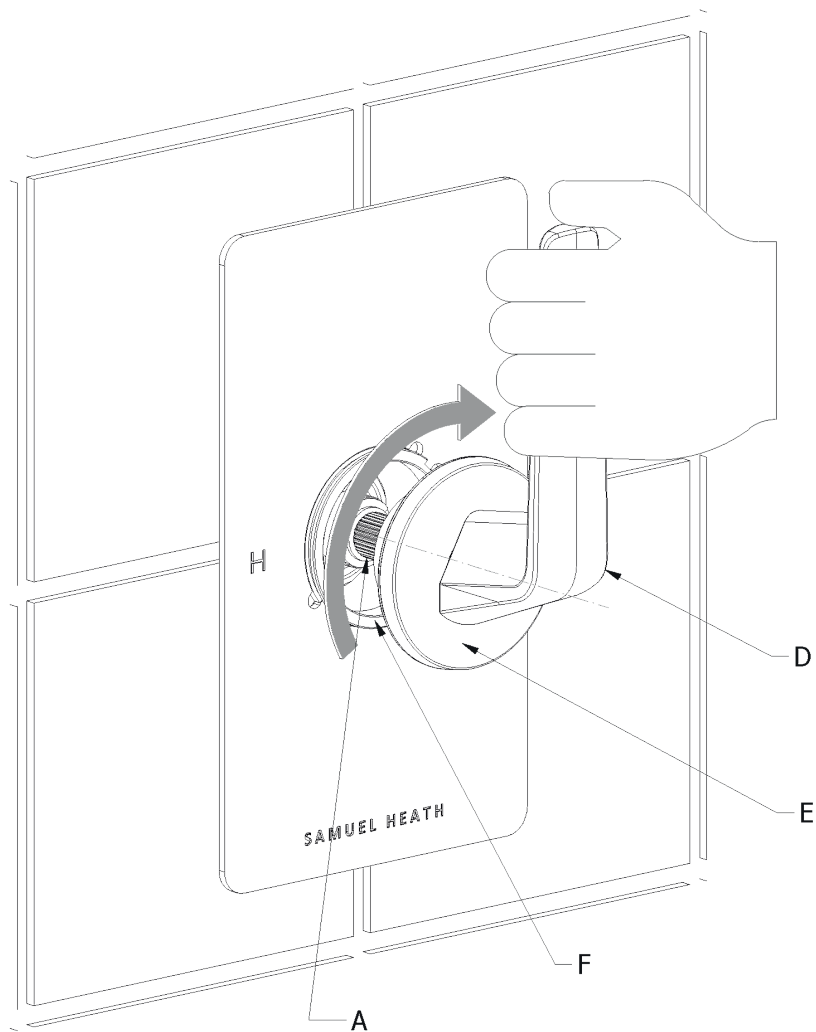
2. Ensure that the black line on the temperature spindle is in line with the groove as shown.
3. Push the long spline adaptor (A) onto the temperature spindle and secure with screw (B) ensuring that the spindle does not rotate when tightening.

## Installaton



4. Apply a bead of silicone sealant to the wall where the trim plate assembly (C) will sit.
5. Push trim plate assembly (C) onto the installed shower.
6. To secure the control, hold it in the desired orientation and push control assembly (D) on to the installed shower to engage with spline adaptor (A), ensuring that the female spline teeth inside control assembly (D) align with the male spline teeth on spline adaptor (A) as shown.

## Adjusting the temperature



7. Once control assembly (D) has engaged on spline adaptor (A), grip the control to ensure it remains stationary.

8. Whilst holding the control stationary, rose (E) on control assembly (D) can be screwed into the locking collar (F) on the installed shower.

9. If unhappy with orientation, grip the control to ensure it remains stationary and unscrew rose (E) and pull control assembly (D) from spline adaptor (A). Repeat steps 4-8.



## IMPORTANT NOTES

1. Installation should be carried out by a competent engineer in accordance with water regulations.
2. Before installation ensure supply pipes are flushed clean as debris or loose particles will affect the efficiency of the ceramic disc cartridge.
3. For mixer taps it is recommended that hot & cold pressures are equally balanced.
4. To help maintain the high quality finish please clean with a soft damp cloth. Do not use abrasive polish or cleaners. Stains may be removed using diluted washing up liquid.
5. Ceramic cartridges in hard water areas. To prolong the lifespan and reduce servicing periods of your Samuel Heath tap we recommend that a suitable water softener be fitted. Consult your installer/designer for details.
6. Please note that as with all tap and shower ware it will be necessary from time to time for the products to be serviced, this should be carried out by a qualified Plumbing Engineer.

## NOTES IMPORTANTES

1. L'installation doit être faite par un ingénieur qualifié, selon les règlements du Service Eau.
2. Avant l'installation, il faut s'assurer que les tuyaux d'approvisionnement sont complètement purgés. Les déchets flottants auront un effet détrimentaire sur l'efficacité de la cartouche céramique.
3. Il est recommandé que les pressions de l'eau chaude et eau froide des mitigeurs et mélangeurs soient maintenues à un niveau égal.
4. Pour conserver la finition de haute qualité, nettoyer avec un chiffon doux et humide. N'employer jamais de la cire et des produits abrasifs. Les tâches peuvent être enlevées à l'aide de liquide vaisselle pur.
5. Cartouches en céramique dans les régions à eau calcaire. Pour prolonger la durée et réduire l'entretien de votre robinetterie Samuel Heath, nous recommandons d'utiliser un adoucisseur d'eau convenable. Veuillez consulter votre installateur/fournisseur pour plus de renseignements.
6. Veuillez noter qu'un entretien sera nécessaire de temps en temps et doit être effectué par un installateur qualifié.

## WICHTIGE HINWEISE

1. Installation sollte durch einen kompetenten Fachmann und nach den üblichen Vorschriften ausgeführt werden.
2. Vor Installation Wasserleitung gründlich durchspülen. Verschmutzung wird die Funktion der Kartusche erheblich einschränken.
3. Für Mischbatterien ist es wichtig, daß Wasser mit gleichem Druck eingeführt wird.
4. Um den optimalen Zustand dieses Produktes zu erhalten, wischen Sie es bitte nur mit einem feuchten, weichen Lappen ab. Auf keinen Fall Scheuermittel verwenden. Flecken lassen sich mit unverdünntem Geschirrspülmittel entfernen.
5. Keramikkartuschen in Hartwasserbereichen. Um die Lebensdauer zu verlängern und Wartungszeiten zu reduzieren empfiehlt Samuel Heath den Einsatz eines geeigneten Wasserenthärter. Fragen Sie Ihren Installateur/Designer um Rat.
6. Bitte merken Sie, dass alle Armaturen ab und zu eine Wartung brauchen. Diese soll durch einen kompetenten Installateur ausgeführt werden.

## ATENCION

1. La instalación se debe realizar por un fontanero.
2. Antes de la instalación, deben pulgar las tuberías dejando correr el agua por las tuberías para que arrastren los residuos de montaje/obra, con el motivo de que no afecte la eficacia del cartucho de cerámica.
3. Para grupo baño/ducha se recomienda que las presiones del agua caliente y frío sean equilibradas.
4. Para ayudar a mantener el acabado de este producto, limpiar con un paño húmedo suave. No se debe emplear productos abrasivos de baño. Las manchas se pueden quitar empleando líquido lava-vajillas puro.
5. Cartuchos cerámicos en áreas de aguas duras. Para prolongar su vida útil y reducir los periodos de reparación de su grifo SamuelHeath recomendamos la instalación de un descalcificador de agua. Consulte a su instalador para más detalles.
6. Igual que con todo tipo de grifería y duchas, de vez en cuando será necesario llevar a cabo una revisión al producto; esto debería ser realizado por un fontanero calificado.

## ATTENZIONE

1. L'impianto deve essere montato da personale tecnico in conformità alle vigenti leggi.
2. Prima dell'installazione assicurarsi che le tubature dell'acqua siano pulite. Detriti o residui di lavorazione compromettono l'efficienza del cartuccio.
3. Per i gruppi, si raccomanda che le pressioni acqua calda e acqua fredda siano ugualmente bilanciate.
4. Per mantenere la finizione di ottima qualità, pulire con un panno soffice e inumidito. Non usare creme lucidanti e materiali abrasivi. Le macchie potranno essere tolte usando del detersivo per piatti puro.
5. Come con tutti i tipi di rubinetti e docce, di volta in volta è necessario effettuare una revisione al prodotto; questo dovrebbe essere fatto da un idraulico qualificato.

## SAMUEL HEATH

### Head Office and Customer Service

Leopold Street  
Birmingham  
England  
B12 0UJ

T: +44 (0)121 766 4200

Info@samuel-heath.com  
www.samuel-heath.co.uk

### US Customer Service

usa@samuel-heath.com  
Federal I.D. No. 58-1504682  
www.samuel-heath.com

8-40695

Issue: B