

SAMUEL HEATH

Product Data Sheet

V759 Lever (Single)



V759-LF



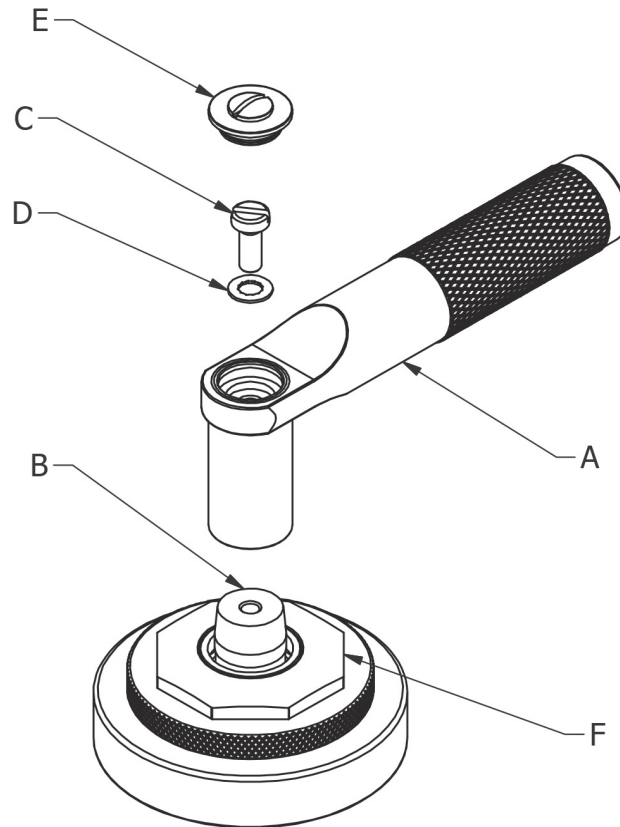
V759-LK



V759-LL

For more technical information visit:
www.Samuel-Heath.com

Fitting Instructions

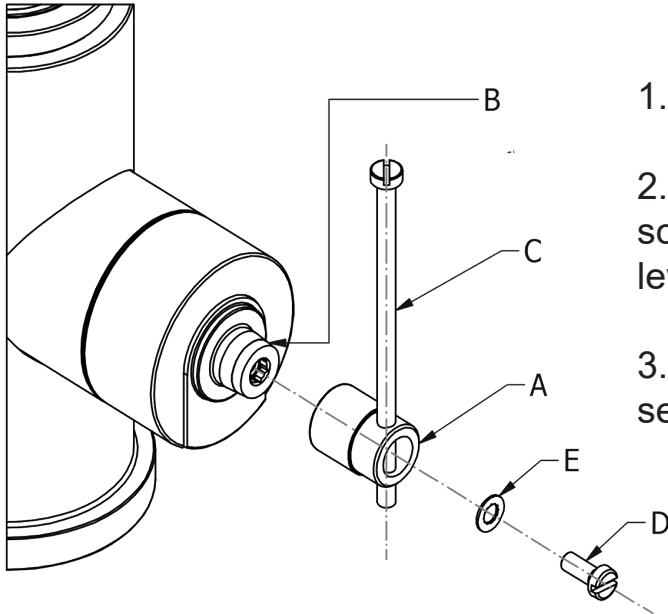


1. Screw handle (A) onto spindle (B) using screw (C) and washer (D).
2. Push indice (E) into the handle option (A) to conceal the fixing.
3. The octagonal nut (F) can be rotated to the desired angle.

Note: The taper on the spindle (B) will lock in to the female taper in the handle option (A).

To remove the handle option (A) remove the screw (C) and washer (D). The handle option (A) has an M5 thread through its central fixing hole, by screwing an M5 screw in to this it will push the handle option (A) and the spindle (B) apart.

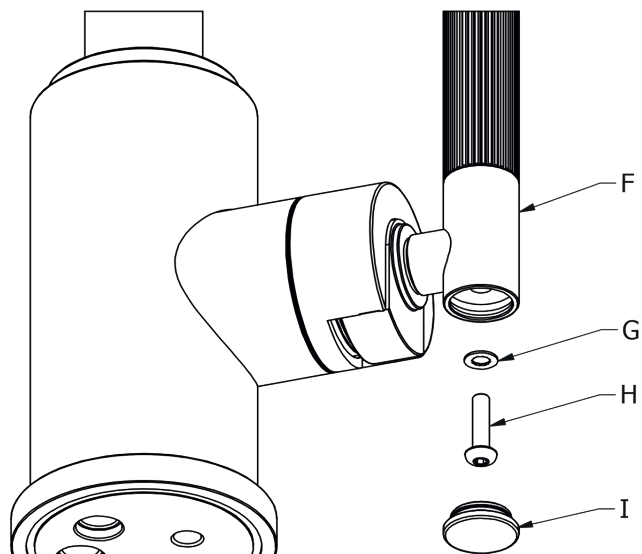
Fitting Instruction - Step 1:



1. Place adapter (A) onto the tapered spindle (B).
2. Align the adapter (A) using assembly guide screw (C) to mimic the desired position of the lathe lever.
3. Carefully remove guide screw (C) and secure adapter using screw (D) and washer (E).

Fitting Instruction - Step 2:

4. Attach lathe lever (F) to adapter (A) using screw (H) and washer (G).
5. Conceal screw using indice (I).



SAMUEL HEATH
Head Office and Customer Service
Leopold Street
Birmingham
England
B12 0UJ

T: +44 (0)121 766 4200
F: +44 (0)121 772 3334

Info@samuel-heath.com
www.samuel-heath.com

US Customer Service
Federal I.D. No. 58-1504682
www.samuel-heath.com

8-40460
Issue :D