

SAMUEL HEATH

Product Data Sheet

V751-XF Pure Cross Tops (Pair)/ V751-XK Industrial Cross Tops (Pair)/
V751-LF Pure Levers (Pair)/ V751-LK Industrial Levers (Pair)/
V751-LL Lathe Levers (Pair)/ V751-LW Lathe Hand Wheels (Pair)



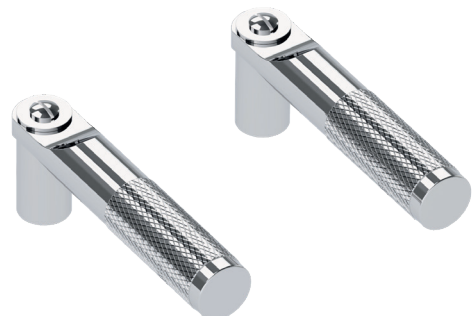
V751-XF



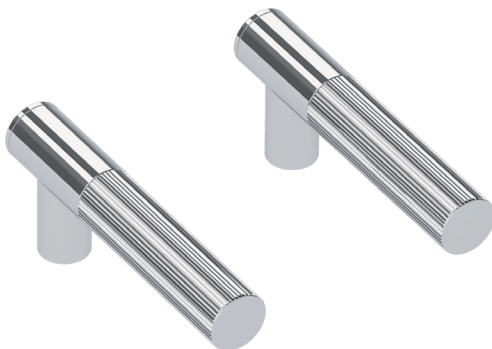
V751-XK



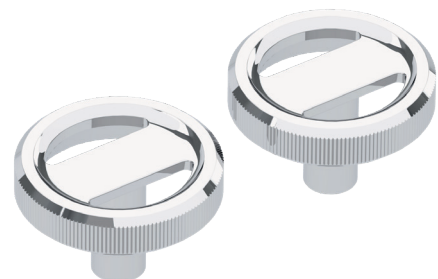
V751-LF



V751-LK



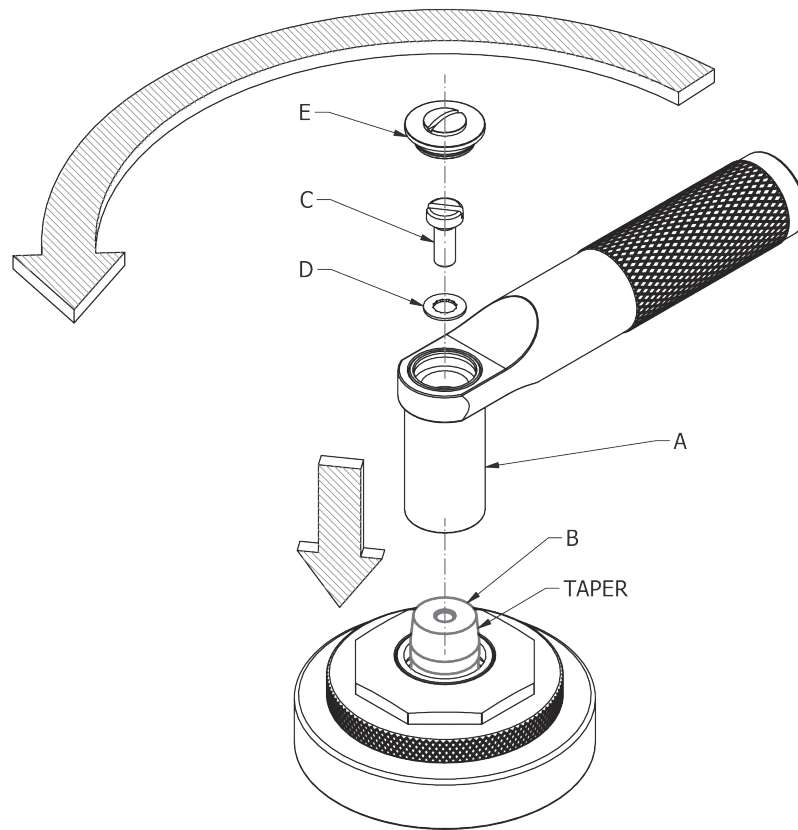
V751-LL



V751-LW

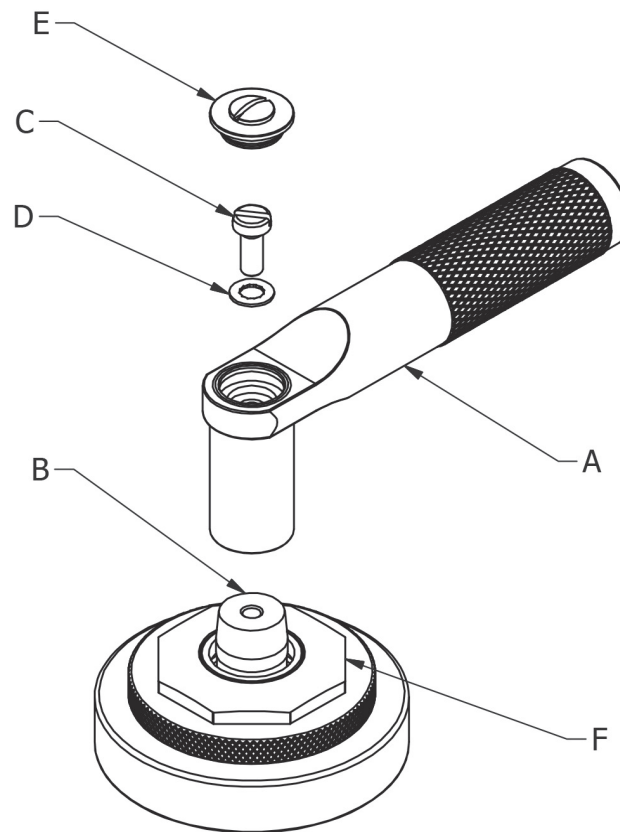
For more technical information visit:
www.Samuel-Heath.com

Adjustment

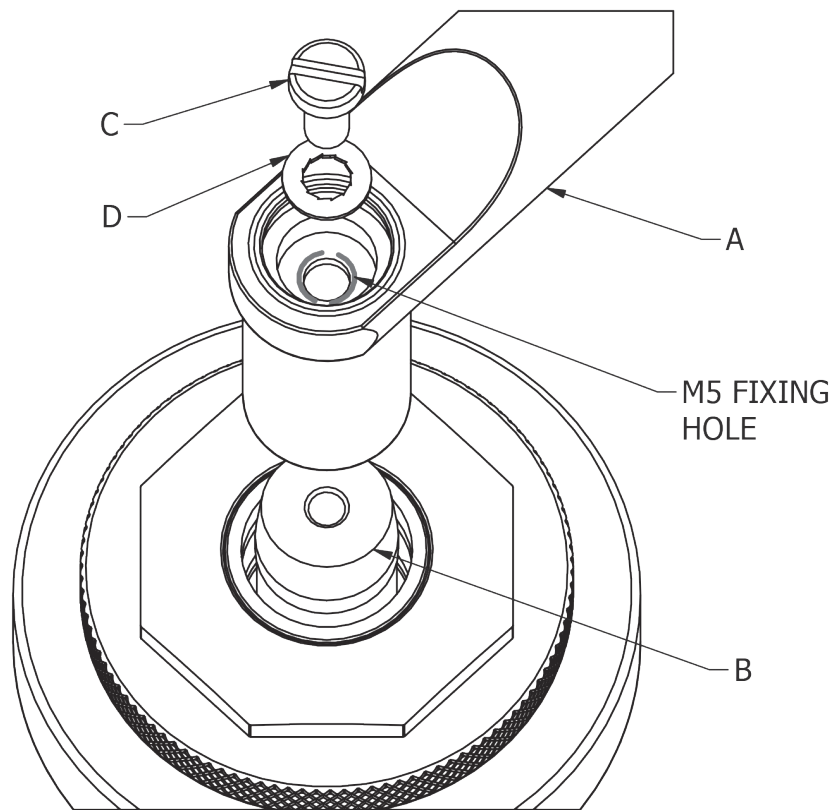


1. LF, LK, LL, XF, XK controls feature “infinite adjustment”.
2. Align handle option (A) at any desired angle.
3. Push handle option (A) on to the male taper of spindle (B).
4. Lock in to desired position using screw (C) & washer (D).

Control Assembly Instructions - LF, LK, XF & XK



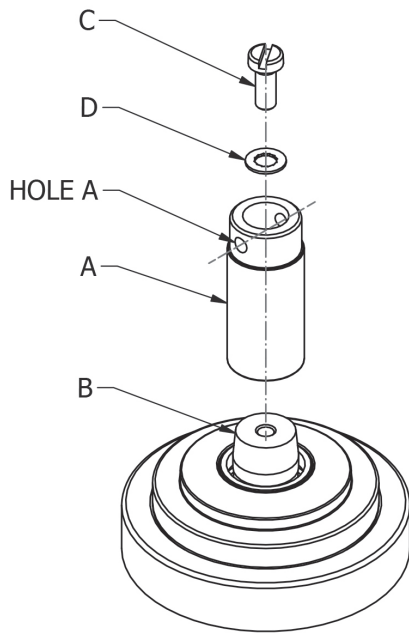
1. Screw handle (A) onto spindle (B) using screw (C) and washer (D).
2. Push indice (E) into the handle option (A) to conceal the fixing.
3. The octagonal nut (F) can be rotated to the desired angle.



Note: The taper on the spindle (B) will lock in to the female taper in the handle option (A).

To remove the handle option (A) remove the screw (C) and washer (D). The handle option (A) has an M5 thread through its central fixing hole, by screwing an M5 screw in to this it will push the handle option (A) and the spindle (B) apart.

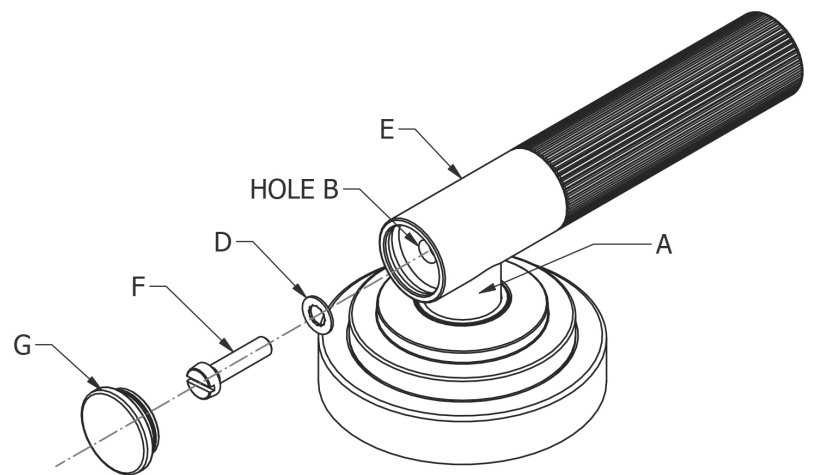
Control Assembly Instructions - LL



Step 1:

1. Secure stem (A) onto spindle (B) using screw (C) and washer (D).
2. Make note of the position of [HOLE A] for Step 2, align using supplied 80mm screw.

The taper on the spindle (B) will lock into the female taper in the stem (A).



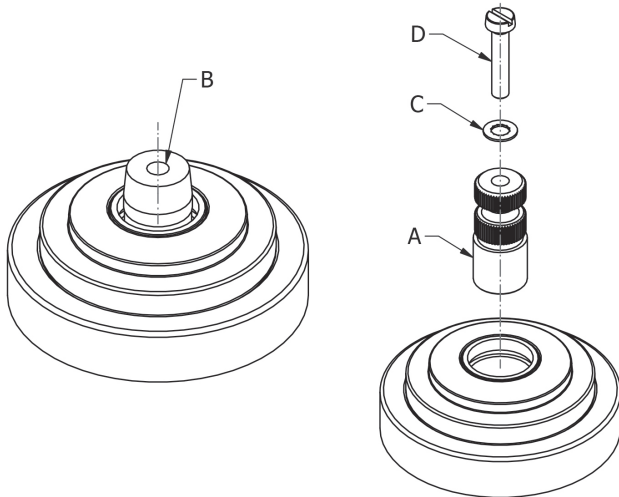
Step 2:

3. Push lever assembly (E) onto stem (A), ensuring HOLE A & HOLE B are in alignment.
4. Secure lever assembly (E) using screw (F) and washer (D) .
5. Push indice (G) into the lever assembly (E) as shown, to conceal the fixing.

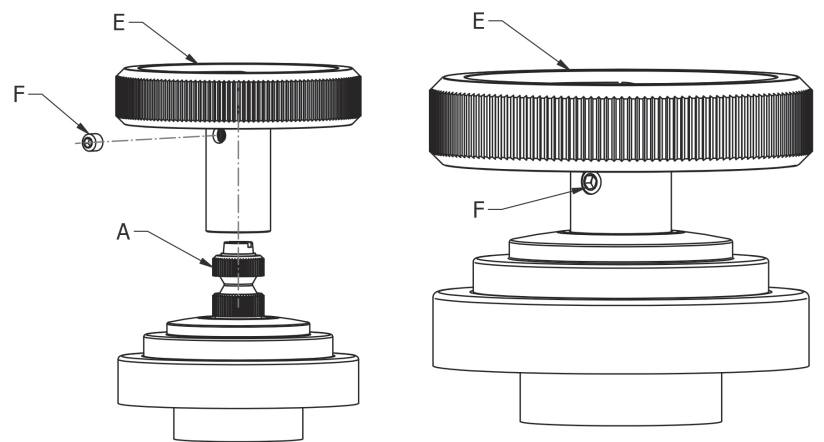
To remove the lever assembly (E), remove indice (G), screw (F) and washer (D). Lever assembly will then lift off, exposing the stem (A).

To remove the stem (A), remove screw (C) and washer (D). There is then an M5 thread through the central fixing hole on the stem (A). By screwing an M5 screw into this, it will push the stem (A) and spindle (B) apart.

Control Assembly Instructions - LW



1. Remove tapered spindle (B) and discard. This component is not required with the hand wheel (E) control option.
2. Replace taper spindle (B) with splined spindle (A) as shown.
3. Secure splined spindle (A) to the cartridge, using Screw (D) and washer (C).



Alignment:

1. Rotate hand wheel (E) to desired position.
2. Once Aligned, push hand wheel (E) onto spined spindle (A) and secure using set screw (F).

SAMUEL HEATH
Head Office and Customer Service
Leopold Street
Birmingham
England
B12 0UJ

T: +44 (0)121 766 4200

Info@samuel-heath.com
www.samuel-heath.co.uk

US Customer Service
usa@samuel-heath.com
Federal I.D. No. 58-1504682
www.samuel-heath.com

8-40459
Issue: F